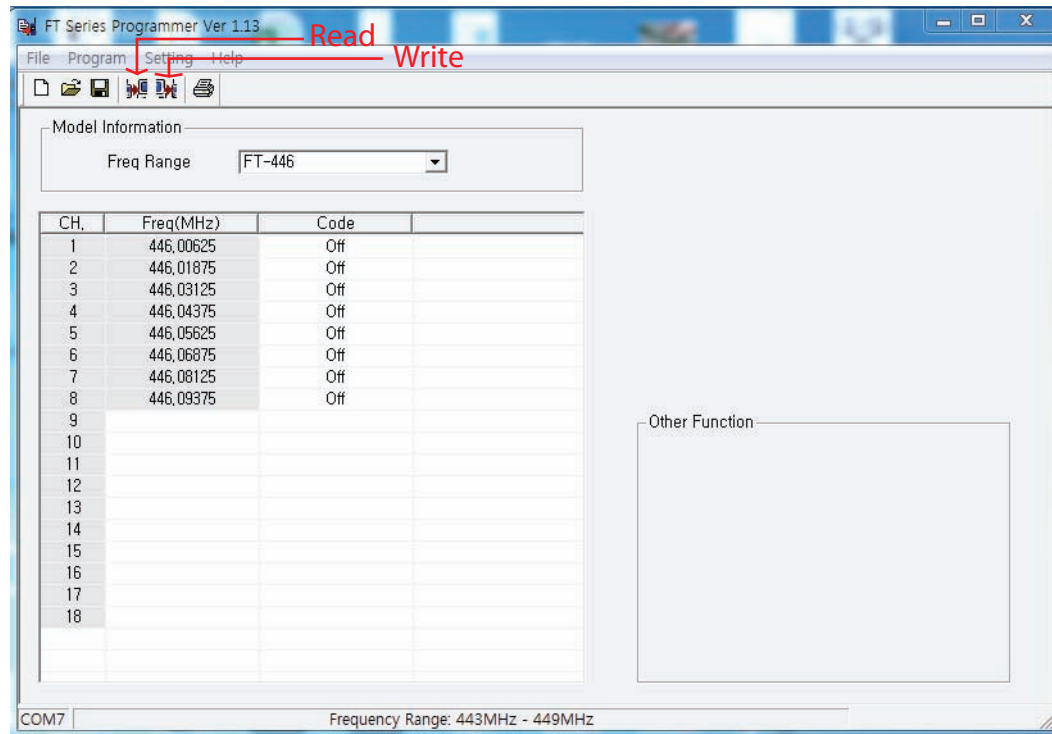


How to program for FT – Series

July 12th, 2018

1. Download exe file from Maytel's ftp site www.webhard.net,
ID : maytel, PW : maytel, Folder 'FT-446(80703)' and file 'FT Series programmer v1.13.exe'.
2. Install the exe file in your P/C.
3. Open the 'FT Series programmer'.



4. Select the model number in the box of Frequency Range.
According to the model number you choose, the list of default CH & Frequency are displayed.
5. Choose the CTCSS or the DCS code number per CH you desire by click the scroll bar in the right side of code box.

6. Enter the frequency per channel you want to add next to the list of default frequency and channel.
It is available to add up to 10 channels within the frequency 446MHz \pm 3MHz for FT-446 or 465MHz \pm 3MHz for FT-465.
7. Connect the P/C program cable between the P/C and the FT-446/465.
8. Click the "Write" in the top menu bar and tap the "OK" on the pop up of 'Write data to radio'.
9. In the FT-446/465 FT-Series, the power is turned off and on again automatically.
The new frequency data you entered is downloaded in the FT-446/465 completely.
10. In case you read the frequency data you have in the FT-446/465 and revise it, open the 'FT Series programmer'.
11. Connect programmable cable between the P/C and the FT-446/465 and click the "Read" icon in the top menu bar.
12. Tap the "OK" on the pop up of 'Read data from radio'.
In the FT-446/465, the power is turned off and on again automatically.
After that, the frequency list of FT-446/465 has is displayed.
13. Enter the new frequency as above step 4~6 and then click the "Write" in the top menu bar and tap the "OK".
14. In the FT-446/465, the power is turned off and on again automatically.
The new frequency data you entered is downloaded in the FT-446/465 completely.